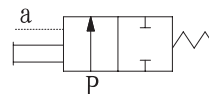




Q22HDN series

2-Position 2-Way Fluid Control Valve

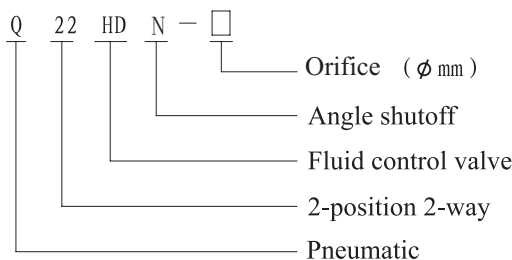
• **Graphic Symbol**



• **Product Features**

The Q22HDN series 2-Position 2-Way fluid control valve is suitable for neutral gases and liquids, detergents and controllable solvents. The externally-piloted angle valve is actuated by a compact piston actuator mechanism. Compared with conventional shutoff valves, its construction is more suitable for high flow applications. Plastic actuator with stainless steel body.

• **Model Designation**

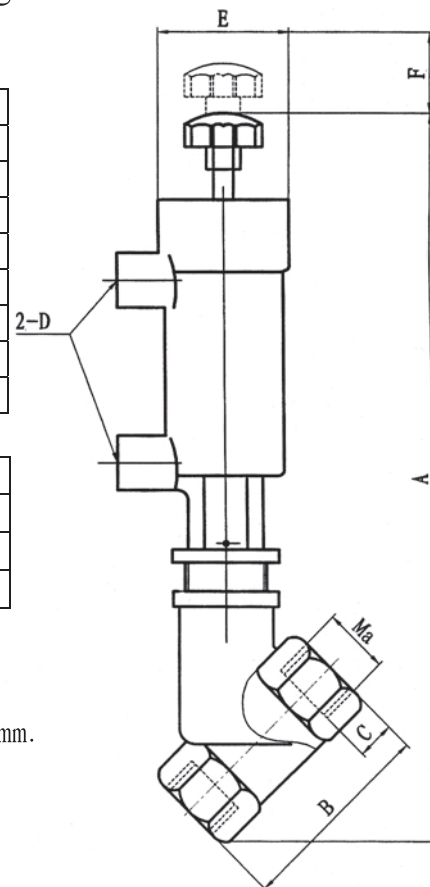


• **Mounting Dimension**

• **Technical Parameter**

Model	Q22HDN-15	Q22HDN-20	Q22HDN-25
Orifice (φ mm)	15	20	25
Connector thread	G1/2"	G3/4"	G1"
Working medium	Neutral gases or Liquids Detergents controllable solvents		
Working pressure (MPa)	0-0.3		
Minimum control pressure (MPa)	0.3	0.4	
Medium and Ambient temperature(°C)	5-50		
Coefficient of flow K _v value(M ³ /h)	4	8	19
Leakage rate (ml/min)	≤200		≤200

Model	Ma	A	B	C	D	E	F
Q22HDN-15	G1/2"	217	64	12	G1/8"	Ø42	15
Q22HDN-20	G3/4"	229	68	13	G1/8"	Ø42	15
Q22HDN-25	G1"	235	74	14	G1/8"	Ø42	15



• **Ordering Example**

Example: Q22HDN -25 5 pieces

Meaning: 5pieces of Q22HDN series 2-way fluid control valves with a Orifice φ25mm.